

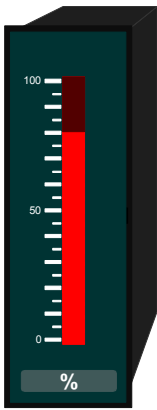
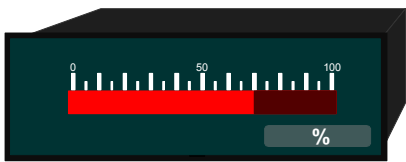
Bargraph vertical or horizontal

BVO2, BHO2

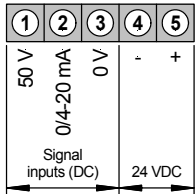
- Without setpoints

Bargraph

- Direct voltage
- Direct current



• **Direct voltage, direct current**



(Transmitter connections see last page)

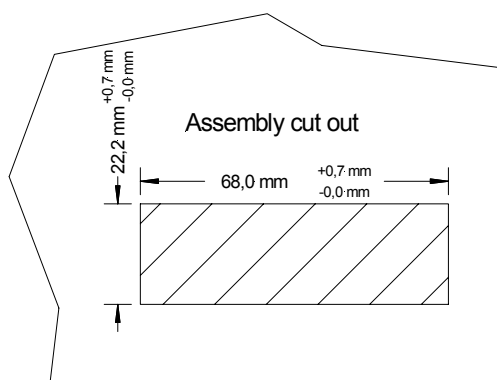
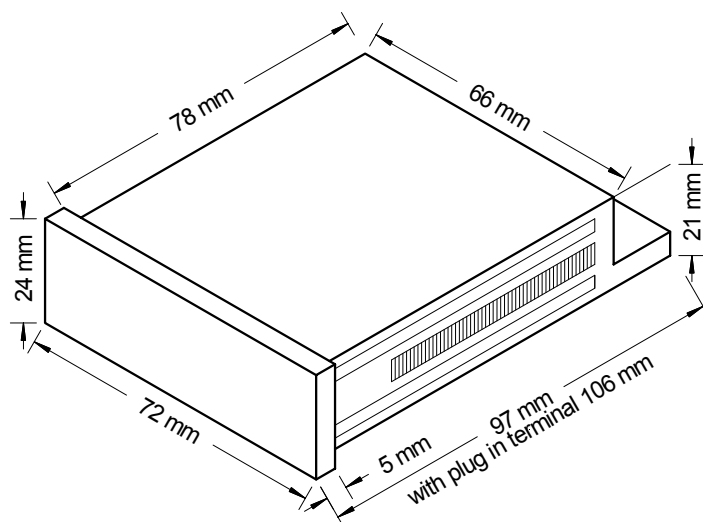
Power supply 24 VDC
(galv. insulated)

vertical **BVO 2.001.576B**
horizontal **BHO 2.001.576B**

OPTIONS	BVO, BHO... Direct voltage...	Additional price
		EUR
LED green	x	12,80
Protection IP54	x	6,15
Protection IP65	x	28,10
Other measuring inputs on demand	x	
Other power supplies on demand	x	
Dimension label selectable	x	

Technical data

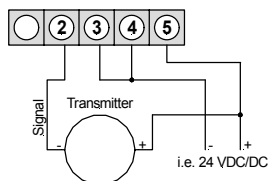
Dimensions	Housing	72 x 24 x 106 mm, including plug in terminal
	Assembly cut out	68 ^{+0.7} x 22.2 ^{+0.3} mm
	Fastening	special quick plastic clamp proper to fix in wall thickness up to 50 mm
	Housing material	PC/ABS-blend, colour black, UL94V-0
	Protection	at the front IP40
		connection IP00
	Weight	approx. 80 g
	Connection	At the rear side via terminals up to 1.5 mm ²
Input	Measuring range	0...50 V (U _{min} = 5 V, U _{max} = 60 V); 0/4...20 mA (I _{min} = 8 mA, I _{max} = 25 mA)
	Input resistance	All ranges selectable via connection terminal / offset adjustment supported by offset potentiometer Ri with 50 V = 100 KΩ 20 mA = 100 Ω
Accuracy	Resolution	20 digit
	Measuring fault	+/- 1 digit
	Temp. drift	100 ppm/K
Power unit	Supply voltage	24 VDC +/-10% galv. insulated
	Power consumption	approx. 1.5 VA
Display	Display	bargraph indication 20 digit red / optionally green
Ambient conditions	Working temperature	0 up to + 60 °C
	Storing temperature	-20 up to + 80 °C



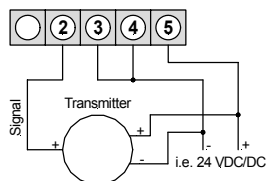
Connection diagrams

BVO, BHO...

2-wire: 4-20 mA



3-wire: 0-20 mA
4-20 mA



3-wire: 0-10 V / 0-5 V
1-6 V

